

Exhibit B

Rogue–South Coast Multi-Species Conservation and Management Plan (RSP)

Part 1:

Management Triggers and Actions (Background information)

Part 2:

Management Action Alternatives (Commission action needed)

1. Wild Fish Emphasis Areas and Mixed Emphasis Areas
2. Rogue Coho Salmon Hatchery Release
3. Winter Steelhead Interim Bag Limits and Conservation Status Thresholds

Part 1: Management Triggers and Actions (Background information)

The Plan includes a variety of management triggers and associated actions to identify how ODFW will adaptively manage in response to changing circumstances. For ease of reference, the table on the following page provides a complete list of all those management triggers and associated actions and has been added to the draft RSP as **Appendix VII – Management Triggers and Actions**.

Note: Grey text in the first column of the table indicates where the relevant management trigger is referenced in the plan - this is for cross-referencing purpose only.

Definitions	Management Trigger:	A pre-defined commitment to take action at a certain point based on relevant monitoring information.
	Purpose:	Goal of taking the action
	Action:	What ODFW will do to achieve the purpose
	Metric/Indicator:	What ODFW will be measuring to determine whether action is needed.

Management Trigger	Purpose	Actions	Metrics/Indicators
General Trigger			
<p>Conservation Status</p> <p><i>Table 8</i></p>	<p>Trigger management actions to improve a population’s status before risk becomes too great.</p>	<p>If a status metric falls below the conservation status threshold for two consecutive years (two-year running average), ODFW will use adaptive management to modify or renew focus on management actions or strategies implemented as part of the RSP to address limiting factors. <i>Examples include, but are not limited to:</i></p> <ul style="list-style-type: none"> • Additional fishery enforcement • Additional fishery restrictions (<i>but also see detail for winter steelhead in Fishery Triggers below</i>) • Focus habitat protection/restoration effort in key habitat for the target SMU, stratum, or population • Take additional measures to reduce impacts of other species if warranted • Additional research and/or monitoring • Transition hatchery programs (primarily coho salmon) to conservation releases with approval from NOAA 	<ul style="list-style-type: none"> • Adult Abundance (where available) • Juvenile Abundance • Juvenile Occupancy • Half Pounder Abundance <p>Note: Additional status metrics may be developed based on proposed monitoring and/or research.</p>
Hatchery Triggers			
<p>Proportion of Hatchery Fish on the Spawning Grounds (pHOS) Limit</p> <p><i>Action III.B.1</i></p>	<p>Minimize mating between hatchery and wild fish.</p>	<p>If monitoring results indicate the multi-year pHOS average exceeds 10% for any population covered by the plan, ODFW will investigate the cause and take actions to reduce pHOS. <i>Examples include, but are not limited to:</i></p> <ul style="list-style-type: none"> • Alter release strategies (location, timing, etc.) • Encourage angler retention of hatchery fish • Enact additional efforts to capture returning hatchery fish not caught in the fishery • Conduct additional research or monitoring • Adjust hatchery production practices • Adjust the number of smolts released 	<p>Population-scale pHOS estimates.</p> <p>Note: genetic pHOS monitoring methods may be used in the future.</p>
<p>Hatchery Smolt Release Targets</p> <p><i>Table 14</i></p>	<p>Provide optimal harvest opportunities and meet mitigation goals while not impeding progress towards desired status targets for wild populations.</p>	<ul style="list-style-type: none"> • If smolt releases, on average, are above targets, ODFW will adjust production consistent with agency policy [OAR 635-007-0545(17)(c)]. • If smolt releases, on average, are below targets, ODFW will investigate and attempt to correct factors limiting production. 	<p>Average hatchery smolt release number</p>

Management Trigger	Purpose	Actions	Metrics/Indicators
Fishing Triggers			
<p>Wild Winter Steelhead Harvest Rate Limit</p> <p><i>Action IV.B.2</i> <i>Table 17</i></p>	<p>Ensure that harvest does not become a limiting factor for winter steelhead populations.</p>	<p>If the harvest rate exceeds plan limits (10 or 15%), ODFW will take actions to reduce harvest in that population or population aggregate, prioritizing actions that maintain fishing opportunity and minimize angling regulation complexity.</p> <p><i>Examples include, but are not limited to:</i></p> <ul style="list-style-type: none"> • Adjust angling regulations (locations open to wild steelhead harvest, season length, bag limit, etc.) • Consider other regulation changes in cooperation with the Oregon State Marine Board (e.g., restrictions on motor use). 	<p>Harvest rate (wild harvest / return)</p>
<p>Conservation Status</p> <p><i>Table 8</i> <i>Table 17</i></p>	<p>Trigger management actions to improve a population’s status before risk becomes too great.</p>	<p>If a status metric falls below the conservation status threshold for two consecutive years (two-year running average), ODFW will take the following actions:</p> <ul style="list-style-type: none"> • For winter steelhead, ODFW will either shift to catch and release or close the fishery, depending on location and metric value. • For other plan species, ODFW will evaluate current fishery impact, indicators of ocean productivity (e.g., ENSO/PDO conditions), and the potential biological costs and benefits from additional fishery restrictions before implementing actions to reduce harvest (cutthroat trout) or incidental mortality (coho, summer steelhead). 	<ul style="list-style-type: none"> • Adult Abundance (where available) • Juvenile Abundance • Juvenile Occupancy • Half Pounder Abundance <p>Note: Additional status metrics may be developed based on proposed monitoring.</p>
<p>Environmental Conditions</p> <p><i>Action IV.A.1</i></p>	<p>Make in season regulation changes to protect spawning fish, vulnerable fish or unique life histories when needed because of adverse conditions (low flow, extreme temperatures, etc.).</p>	<ul style="list-style-type: none"> • When environmental conditions warrant additional protective regulations, ODFW will implement in season angling regulation changes that could include adjusting open locations or seasons, gear restrictions, size limits, or any other feasible regulation change. • ODFW is developing a climate adaptive angling regulation framework for in-season management through a separate statewide process. 	<p>Could include:</p> <ul style="list-style-type: none"> • Streamflow • Temperature • Indicators of ocean productivity
<p>Other</p> <p><i>Action IV.A.1</i></p>	<p>Use all available information, including new monitoring information (e.g., adult surveys) to inform management of fisheries.</p>	<ul style="list-style-type: none"> • Although not a formal trigger in the plan, ODFW will use all available information to manage fisheries and inform the actions above. • The principle of adaptive management will be critical to implementing the correct actions in the correct locations to address the primary need, and also avoid unnecessarily constraining fisheries when viability is not at risk. 	

Part 2. Management Action Alternatives

(Commission action needed)

A decision is needed by the Commission on the following three topics:

1. Wild Fish Emphasis Areas and Mixed Emphasis Areas
2. Rogue Coho Salmon Hatchery Release
3. Winter Steelhead Interim (5 year) Bag Limits and Conservation Status Thresholds

ODFW will update the final plan with any necessary revisions based on the alternative selected by the Commission for each topic.

1. Wild Fish Emphasis Areas and Mixed Emphasis Areas

Definitions: **Wild Fish Emphasis Area (WFEA):** no hatchery fish releases allowed
Mixed Emphasis Area (MEA): hatchery fish releases allowed

Decision 1: Select one alternative for the designation of wild and mixed fish emphasis areas.

WFEA/MEA designations	<u>Alternative 1 – Staff Proposal</u> Designations apply to all species, including spring and fall Chinook salmon	<u>Alternative 2</u> Designations only apply to species covered by the RSP
------------------------------	---	--

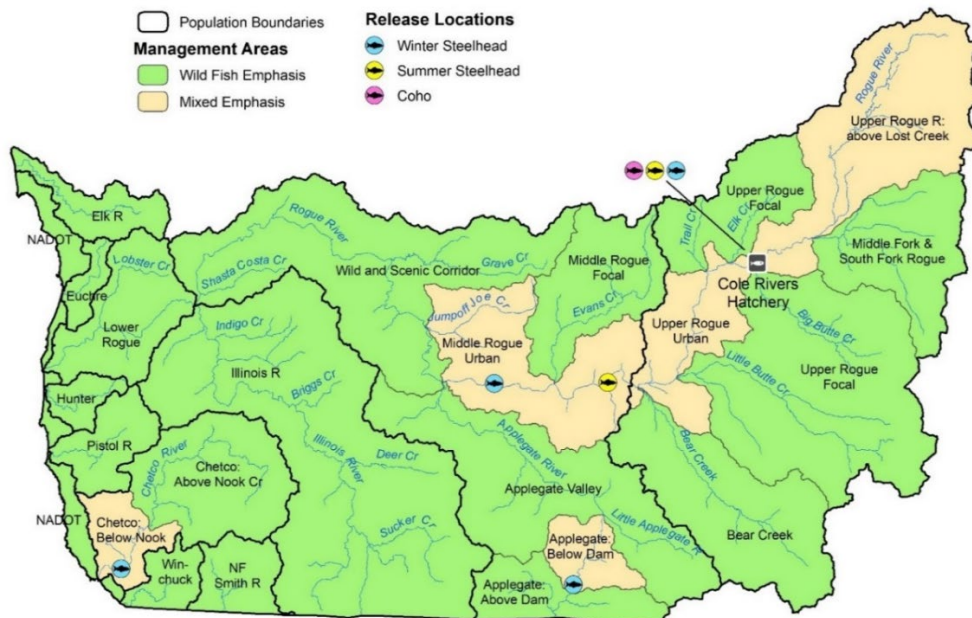
NO DECISION NEEDED (informational only)

The text at locations in the plan identified in the grey column will be changed from the blue to the yellow column if Alternative 2 is chosen above

Action III.A.1*	Locate hatchery programs consistent with Mixed Emphasis Areas (MEAs) and Wild Fish Emphasis Areas (WFEAs) identified in Figure 14 including the Euchre: Below Cedar Cr and Winchuck: Below Moser Cr MEAs, which have no current or proposed hatchery programs; OFWC approval is required to eliminate a hatchery program from an MEA or initiate a hatchery program in a WFEA.	Locate hatchery programs for winter steelhead, summer steelhead, coho salmon, and coastal cutthroat trout consistent with Mixed Emphasis Areas (MEAs) and Wild Fish Emphasis Areas (WFEAs) identified in Figure 14 ; OFWC approval is required to eliminate a hatchery program from an MEA or initiate a hatchery program in a WFEA.
Strategy III-3* Note: any change in strategy text would also be made in draft OARs	Manage for wild fish emphasis or mixed emphasis in the appropriate Management Areas as outlined in Figure 14 of the RSP and obtain Commission approval for starting new or eliminating existing hatchery programs in a Management Area relative to those in Table 14 of the RSP (excluding educational and research programs and conservation actions).	Manage for wild fish emphasis or mixed emphasis for plan species in the appropriate Management Areas as outlined in Figure 14 of the RSP and obtain Commission approval for starting new or eliminating existing hatchery programs in a Management Area relative to those in Table 14 of the RSP (excluding educational and research programs and conservation actions).

*ODFW will re-assess WFEAs and MEAs if in the future it becomes necessary to permanently restrict wild harvest. Any change in designation would require Commission approval at that time.

NOTE: The figure below would replace **Figure 14** in the draft RSP under **Alternative 2**.



2. Rogue Coho Salmon Hatchery Release

Decision 2: Select one alternative for hatchery Coho releases in the Rogue basin

Hatchery Coho releases	<u>Alternative 1 – Staff Proposal</u> Increase Rogue hatchery Coho salmon release by 25,000 smolts	<u>Alternative 2</u> Do not increase Rogue hatchery Coho salmon release
-------------------------------	--	---

NO DECISION NEEDED (informational only)

The actions in the plan identified in the grey column will be changed from the blue to the yellow column if Alternative 2 is chosen above

Action III.F.1	Increase Coho salmon release target from 75,000 to 100,000 smolts.	Maintain current release of 75,000; remove Action III.F.1 from Table 13 and revise Table 14 .
Action III.C.5	Release restored hatchery Coho production (25,000 smolts) near Gold Hill.	Action III.C.5 not applicable; remove from Table 13 and revise Table 14 .

3. Winter Steelhead Interim Bag Limits and Conservation Status Thresholds

There are two decisions needed on this topic

Decision 3.1: Select one alternative for <u>interim</u> wild winter steelhead bag limits during the 5-year period (2022–2026) after adoption of the RSP.		
Interim Wild Winter Steelhead Bag Limit (daily/annual)	Alternative 1 – Staff Proposal Maintain current 1/3 bag limit	Alternative 2 Change regulations to Catch and Release

NO DECISION NEEDED (informational only)

The actions in the plan identified in the grey column will be changed from the blue to the yellow column if Alternative 2 is chosen above

IV.B.1. New fishing authorizations	Implement wild steelhead harvest card <u>during</u> 5-year interim period.	Implement wild steelhead harvest card <u>after</u> 5-year interim period.
IV.B.2. New harvest rate control	Implement <u>during</u> 5-year interim period.	Implement <u>after</u> 5-year interim period.
IV.B.3. 5-year review of angling regulations	Use monitoring data from 5-year interim period to evaluate appropriateness of bag limit relative to harvest rate control.	Action IV.B.3 not applicable; after 5-year interim period, implement a 1/3 bag limit and manage adaptively to ensure consistency with the harvest rate control moving forward.
V.A.6. Chetco creel survey	Implement <u>during</u> 5-year interim period.	Implement <u>after</u> 5-year interim period.

Decision 3.2: Select one option for winter steelhead conservation status thresholds.			
Winter Steelhead Conservation Status Thresholds		Option A – Staff Proposal	Option B
Coastal Stratum	Juvenile Abundance Index <i>(Figure 1 below)</i>	30,000	40,000
	Juvenile Site Occupancy <i>(Figure 2 below)</i>	75%	75%
Rogue Stratum	Wild Half-Pounder Index <i>(Figure 3 below)</i>	200	300

Combined Alternatives
 AT-A -GLANCE

Alternative 1, Option A

- This the staff recommendation. This alternative maintains the rule established by the Oregon Fish and Wildlife Commission in 2018, a bag limit of 1 fish per day/3 fish per year (see **RSP Table 17** and **Figure 15** for details). Conservation status thresholds for abundance metrics are set to the 5th percentile of historical observations (thresholds are within the historical range of variation).
 - monitoring and environmental data will be used to determine when fishery restrictions are put in place.

Alternative 1, Option B

- Maintains the current interim bag limit of 1 fish per day/3 fish per year; conservation status thresholds for abundance metrics include an additional buffer and are set to the 15th percentile of historical observations. Occupancy thresholds are the same as in **Alternative 1, Option A**.

Alternative 2, Option A

- Changes regulations to catch and release only for wild steelhead in all locations open to winter steelhead fishing during the 5-year interim period (revert to 1 fish per day/3 fish per year thereafter). Conservation status thresholds are the same as in **Alternative 1, Option A**.

Alternative 2, Option B

- Change regulations to catch and release only for wild steelhead during the 5-year interim period (revert to 1 fish per day/3 fish per year thereafter). Conservation status thresholds include an additional buffer, as in **Alternative 1, Option B**.

*Interim bag limit alternatives affect other actions in the plan. Under **Alternative 2**, actions related to wild winter steelhead harvest monitoring would be delayed until after the 5-year interim period

*Under **Alternative 1**, ODFW would conduct a review at the end of the 5-year interim period to determine the appropriateness of bag limits relative to the new harvest rate control. Under **Alternative 2**, this evaluation would not be possible. Therefore, at the end of the 5-year interim period ODFW would implement a 1/3 bag limit and manage adaptively to ensure consistency with the harvest rate limit moving forward.

Illustration of Conservation status
 thresholds for Decision 3.2

